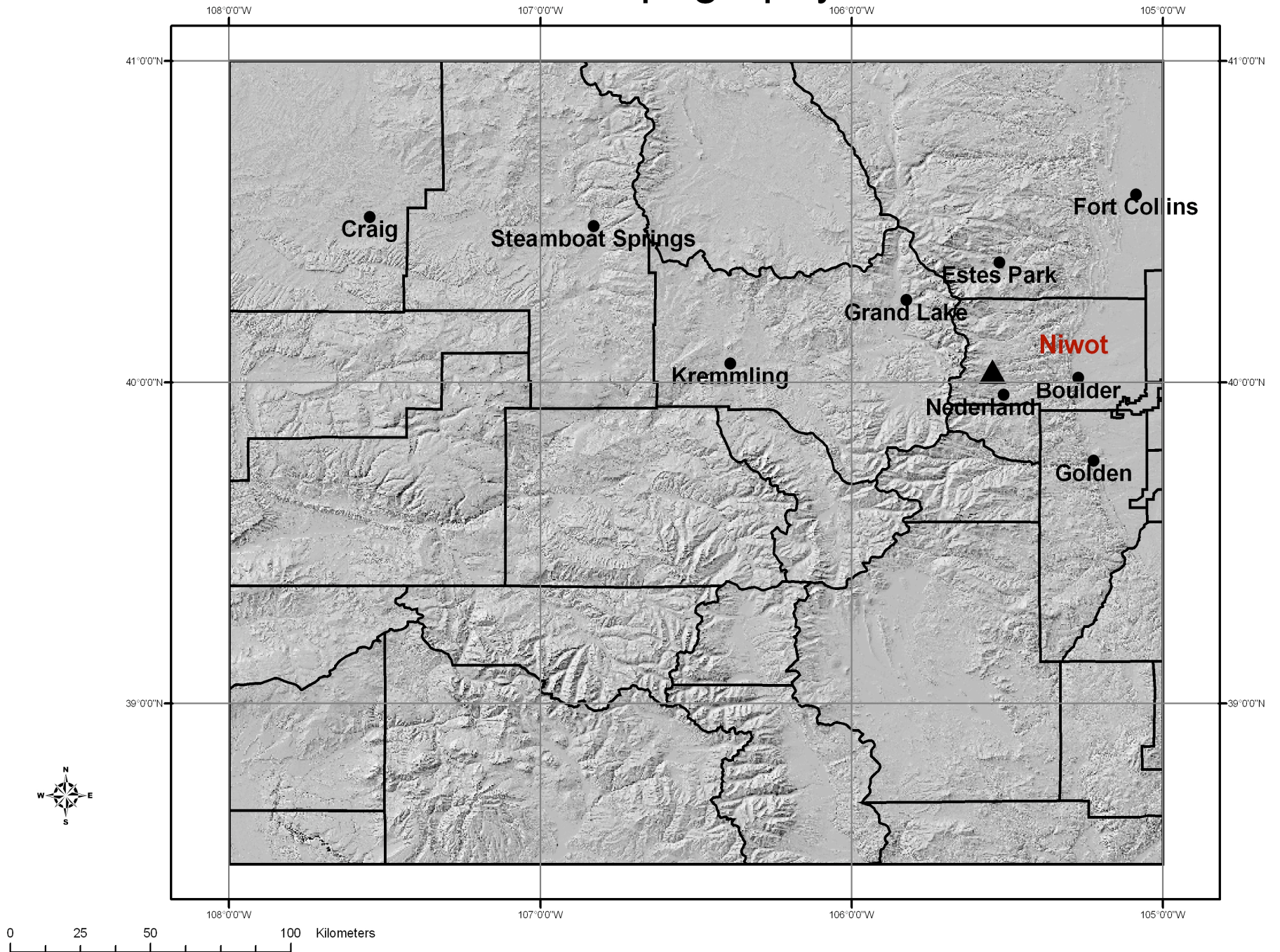
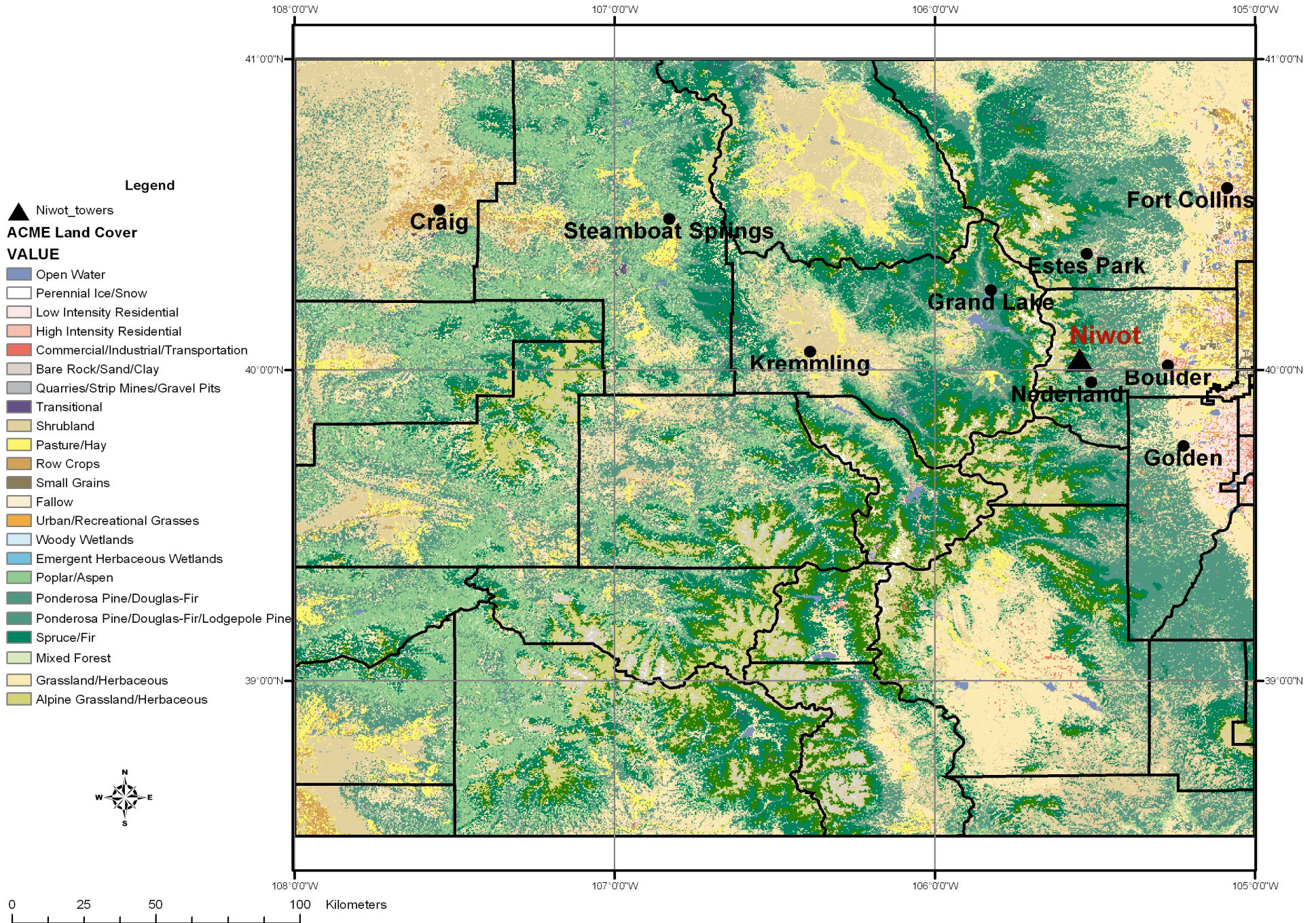


ACME Topography

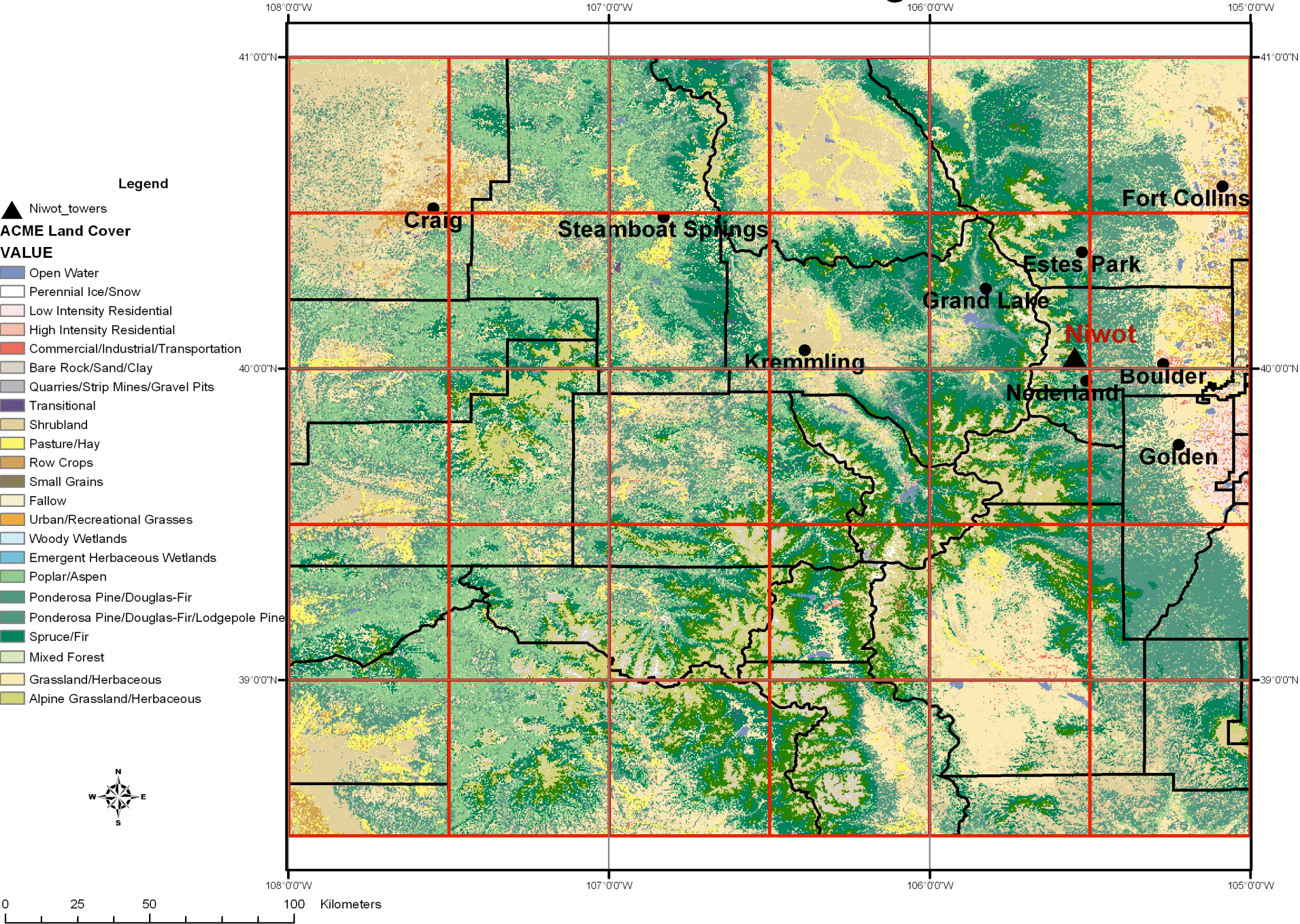


ACME Land Cover Classes

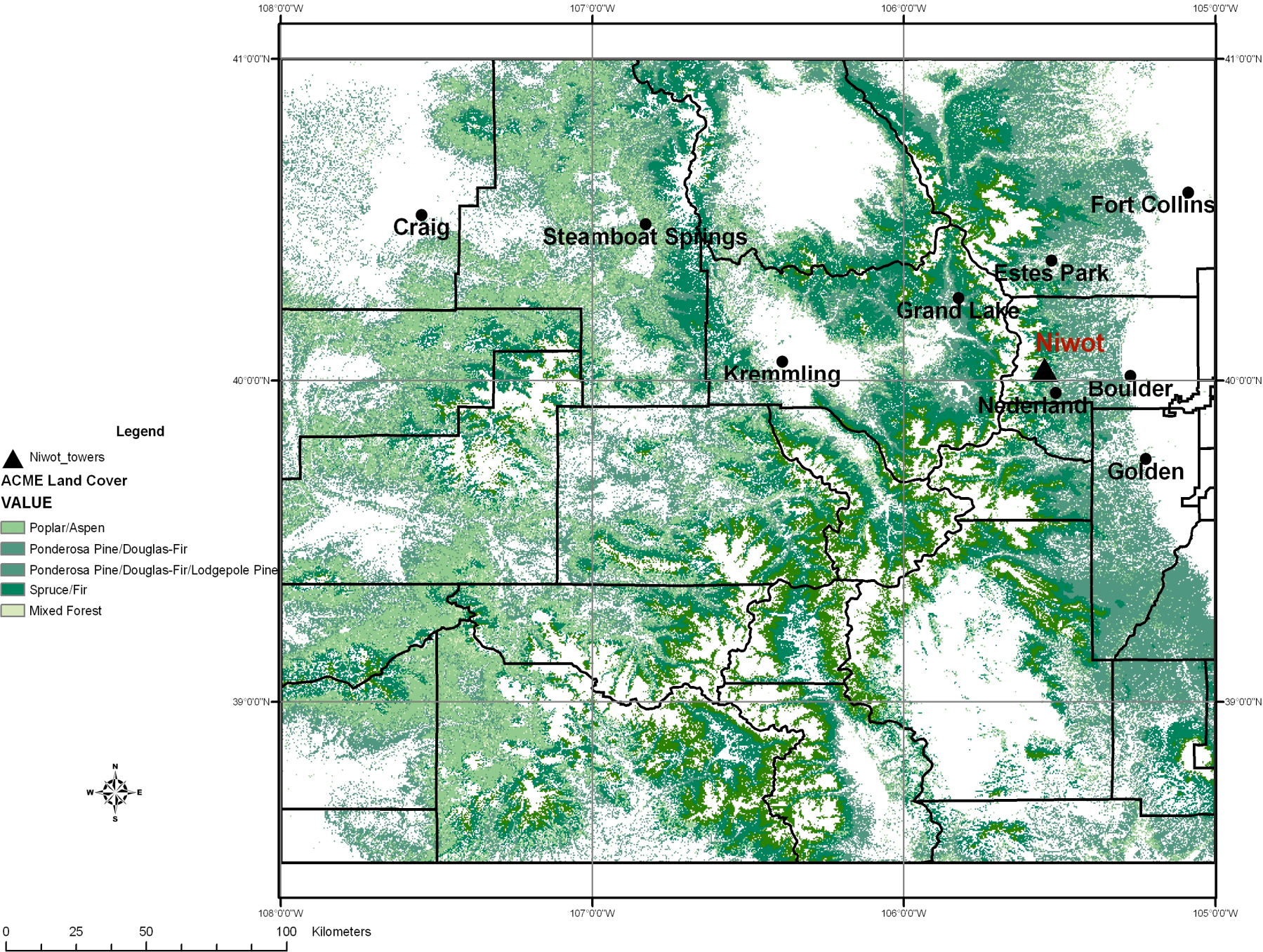


Land_Class	vveg_parameterization	vveg_value	area(km^2)
Open Water	Inland Water Bodies	91	599.9472
Perennial Ice/Snow	Ice	90	411.03
Low Intensity Residential	n/a	n/a	723.96
High Intensity Residential	n/a	n/a	103.77
Commercial/Industrial/Transportation	n/a	n/a	285.9993
Bare Rock/Sand/Clay	n/a	n/a	1318.3119
Quarries/Strip Mines/Gravel Pits	n/a	n/a	42.1389
Transitional	n/a	n/a	142.0929
Shrubland	Mediterranean Shrubland	19 (check disturbance and grass type)	15107.5719
Pasture/Hay	n/a	n/a	3263.1219
Row Crops	n/a	n/a	999.1485
Small Grains	n/a	n/a	104.823
Fallow	n/a	n/a	159.2595
Urban/Recreational Grasses	n/a	n/a	143.4303
Woody Wetlands	Wetlands	92	4.5072
Emergent Herbaceous Wetlands	Wetlands	92	7.6311
Deciduous Forest -- Elevation Zone 1	Aspen	New Parameterization	887.553
Deciduous Forest -- Elevation Zone 2	Aspen	New Parameterization	8857.2123
Deciduous Forest -- Elevation Zone 3	Aspen	New Parameterization	2896.2927
Deciduous Forest -- Elevation Zone 4	Aspen	New Parameterization	345.5244
Evergreen Forest -- Elevation Zone 1	Continental Temperate Coniferous Forest	4	3441.3921
Evergreen Forest -- Elevation Zone 2	Continental Temperate Coniferous Forest	4	12798.7326
Evergreen Forest -- Elevation Zone 3	Boreal Coniferous Forest	2	11634.0327
Evergreen Forest -- Elevation Zone 4	Boreal Coniferous Forest	2	5213.2599
Mixed Forest -- Elevation Zone 1	Continental Temperate Coniferous Forest/Aspen	4/New Parameterization from post-processing	56.1105
Mixed Forest -- Elevation Zone 2	Continental Temperate Coniferous Forest/Aspen	4/New Parameterization from post-processing	663.5547
Mixed Forest -- Elevation Zone 3	Boreal Coniferous Forest/Aspen	2/New Parameterization from post-processing	279.3132
Mixed Forest -- Elevation Zone 4	Boreal Coniferous Forest/Aspen	2/New Parameterization from post-processing	8.1774
Grassland/Herbaceous -- Elevation Zone 1	C3 Grasslands	17	4758.6699
Grassland/Herbaceous -- Elevation Zone 2	C3 Grasslands	17	5170.4244
Grassland/Herbaceous -- Elevation Zone 3	C3 Grasslands	17	3053.1897
Alpine Grassland/Herbaceous -- Elevation Zone 4	Tundra	1	3999.7764

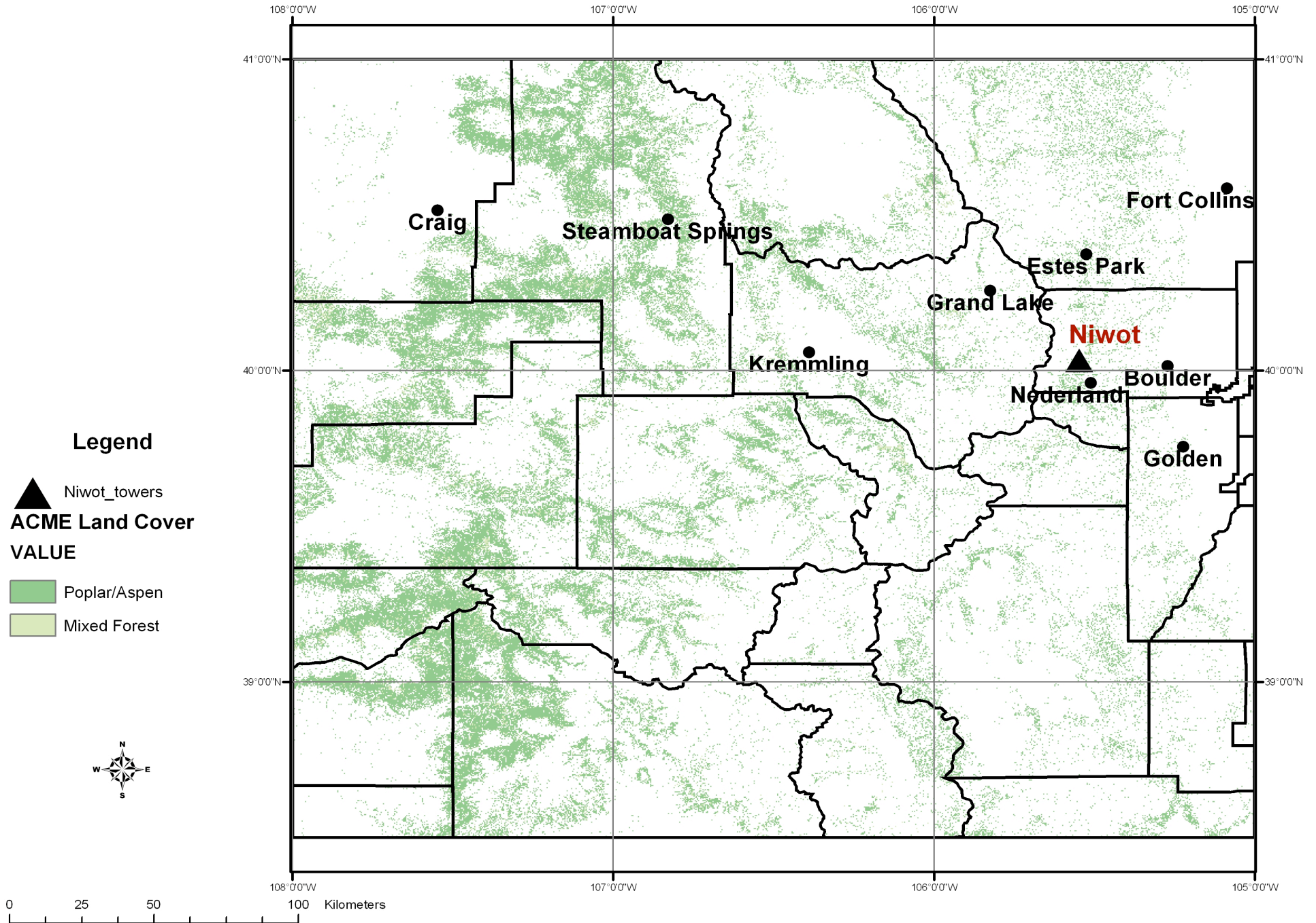
ACME Land Cover with 1/2 Degree Grid



ACME Forest Classifications



ACME Deciduous Forest Classifications



ACME Evergreen Forest Classifications

