

Manitou Colorado - OTDR Report 850 nm

Comments

This is a new direct bury cable installed from seatainer to experimental tower in Manitou Colorado experimental forest. Terminated and verified 6-strand fiber with SC connectors both sides.

Job Info

Job ID	: Manitou Colorado	Reason	: New fiber installation
Contractor	:	Operator A	: Armando Cisneros
Customer	:	Operator B	: Fabian Guerrero
Test Date	: 10/14/2009 (1:44:20 PM)	File	: base.br.trc

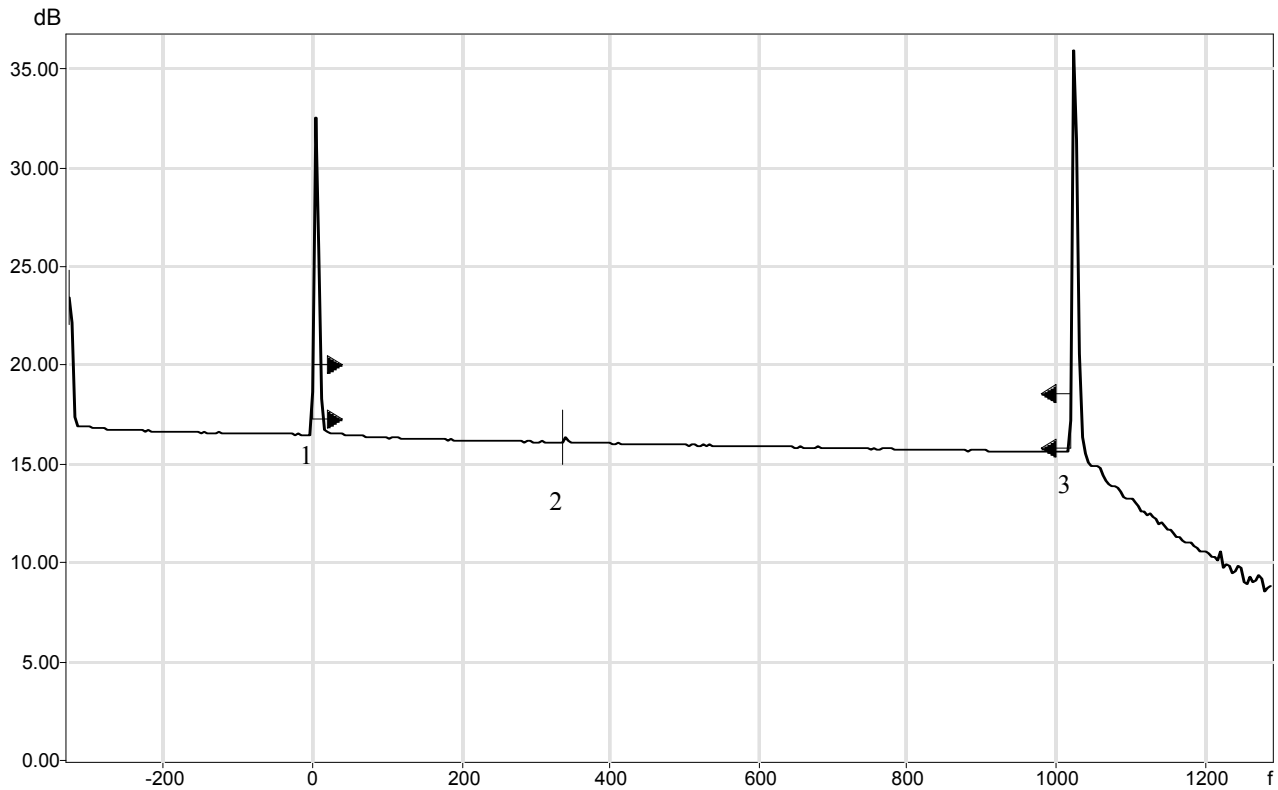
Cable Info

Fiber ID	: Fiber0004	Cable ID	: Cable 1
Location A	: Seatainer	Location B	: Tower
Cable Mfr.	: OCC DX006DALS9KAA2	Type	: MM 50um
Subset ID	:	Color ID	: Brown

Link Measurements

Link Loss	: 0.857 dB	Avg. Splice Loss	: ---
Link Length	: 1.0206 kf	Max. Splice Loss	: ---
Average Loss	: 0.839 dB/kf	Total ORL	: 0.00 dB

OTDR Trace



Manitou Colorado - OTDR Report 850 nm

Events Table

No.	Loc. (kf)	Event Type	Loss (dB)	Refl. (dB)	Att. (dB/kf)	Cumul. (dB)
1	-0.3303	Launch Level	---	-39.1		---
	0.0000	Fiber Section (0.3303 kf)	0.386		1.167	---
		Reflective Fault	-0.008	-22.5		-0.008
2		Seatainer				
	0.3378	Fiber Section (0.3378 kf)	0.380		1.125	0.372
		Reflective Fault (Possible Echo)	-0.019	-63.8		0.353
3		Fiber Section (0.6828 kf)	0.504		0.738	0.857
	1.0206	Reflective Fault	---	-12.5		0.857
		Tower				

Test and Cable Setup

Wavelength	: 850 nm (MM-50µm)	Acq. Time	: 15 s
Filename	: base.br.trc	Pulse Width	: 10 ns
Hardware	: FTB-7200D-12CD-23B-EA-VFL	Helix Factor	: 0.00 %
Serial Number	: 357760	Splice Loss Threshold	: 0.010 dB
Software	: OTDR Advanced 6.11.20.160	Reflectance Threshold	: -72.0 dB
Range	: 1.6 kf	End-of-Fiber Threshold	: 20.000 dB
IOR	: 1.49000		
RBS	: -66.30		

FL-CG CAN Fiber - OTDR Report 1300 nm

Comments

New Install FL-CG Can Fiber.

Job Info

Job ID : FL-CG CAN Fiber
Contractor :
Customer :
Test Date : 10/14/2009 (1:44:38 PM)

Reason :
Operator A : Armando Cisneros
Operator B : Rick Mumford
File : base.br.trc

Cable Info

Fiber ID : Fiber0004
Location A : Seatainer
Cable Mfr. : OCC DX006DALS9KAA2
Subset ID :

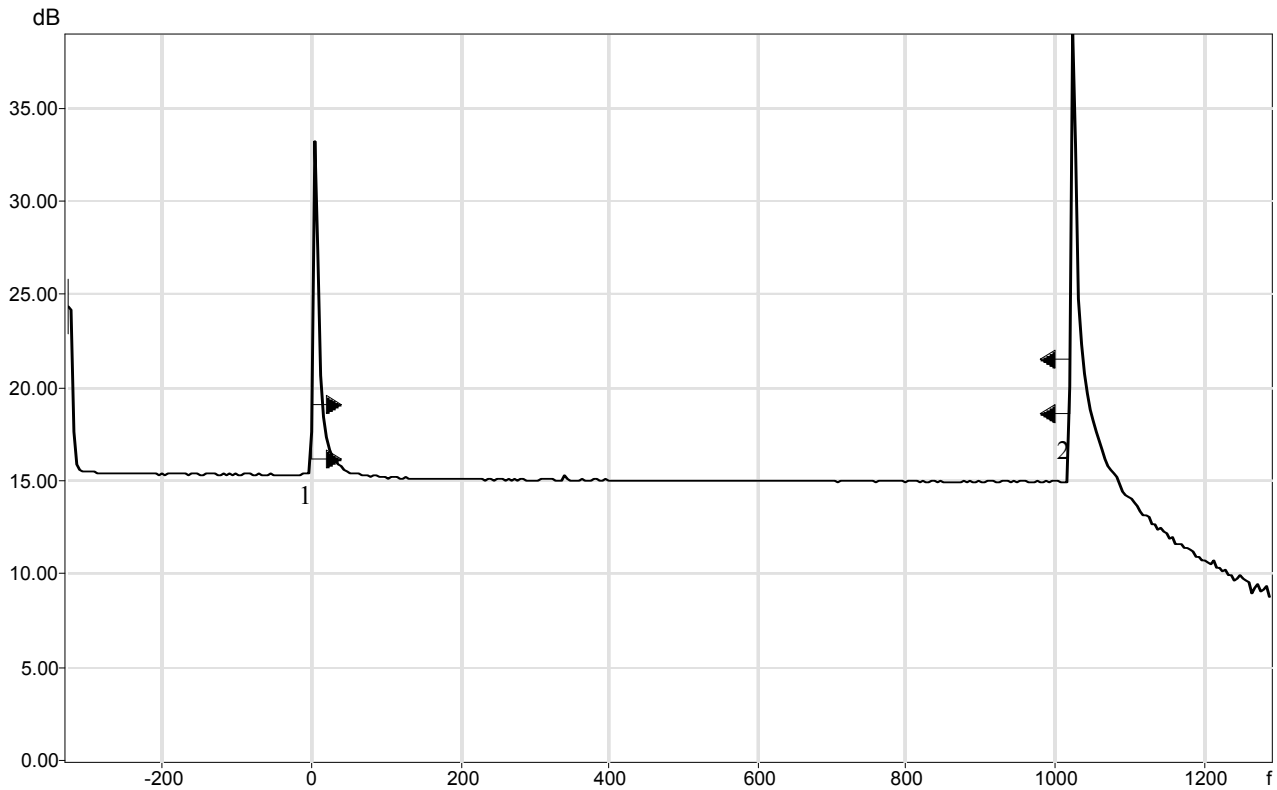
Cable ID : Cable 1
Location B : Tower
Type : MM 50um
Color ID : Brown

Link Measurements

Link Loss : 0.388 dB
Link Length : 1.0197 kf
Average Loss : 0.380 dB/kf

Avg. Splice Loss : ---
Max. Splice Loss : ---
Total ORL : 0.00 dB

OTDR Trace



FL-CG CAN Fiber - OTDR Report 1300 nm

Events Table

No.	Loc. (kf)	Event Type	Loss (dB)	Refl. (dB)	Att. (dB/kf)	Cumul. (dB)
1	-0.3304	Launch Level	---	-40.0		---
	0.0000	Tower				
		Fiber Section (0.3304 kf)	0.106		0.320	---
2	1.0197	Reflective Fault	0.160	-25.7		0.160
		Seatainer				
		Fiber Section (1.0197 kf)	0.228		0.223	0.388
		Reflective Fault	---	-12.9		0.388

Test and Cable Setup

Wavelength	: 1300 nm (MM-50µm)	Acq. Time	: 15 s
Filename	: base.br.trc	Pulse Width	: 10 ns
Hardware	: FTB-7200D-12CD-23B-EA-VFL	Helix Factor	: 0.00 %
Serial Number	: 357760	Splice Loss Threshold	: 0.010 dB
Software	: OTDR Advanced 6.11.20.160	Reflectance Threshold	: -72.0 dB
Range	: 1.6 kf	End-of-Fiber Threshold	: 20.000 dB
IOR	: 1.48600		
RBS	: -73.70		